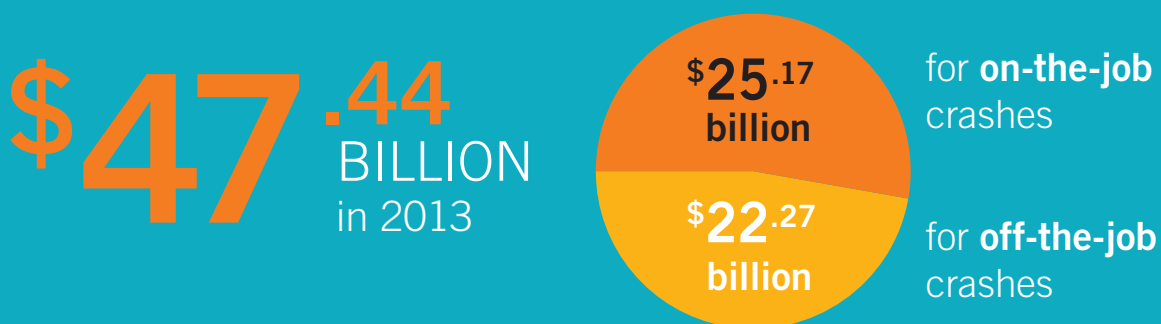


Report: Cost of Motor Vehicle Crashes to Employers—2015™

Employers pay for crashes that happen
both *on* and *off* the job.

THE COST OF CRASHES TO EMPLOYERS

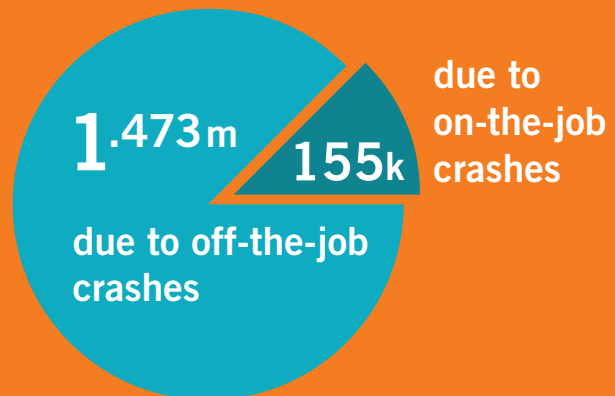


SEE TABLE 2 IN THE COST OF MOTOR VEHICLE CRASHES TO EMPLOYERS—2015™

CRASHES COST EMPLOYERS WHENEVER THEY OCCUR

Lost Work Days

1.628
MILLION
Total



SEE TABLE 1 IN THE COST OF MOTOR VEHICLE CRASHES TO EMPLOYERS—2015™

**Road safety programs help employers
control costs and can make roads safer
for everyone.**

DRIVER BEHAVIOR HAS A DIRECT EFFECT ON EMPLOYER CRASH COSTS



SPEEDING

\$8.4

BILLION



DISTRACTED
DRIVING

\$8.2

BILLION



ALCOHOL

\$6

BILLION



NOT WEARING
SEAT BELT

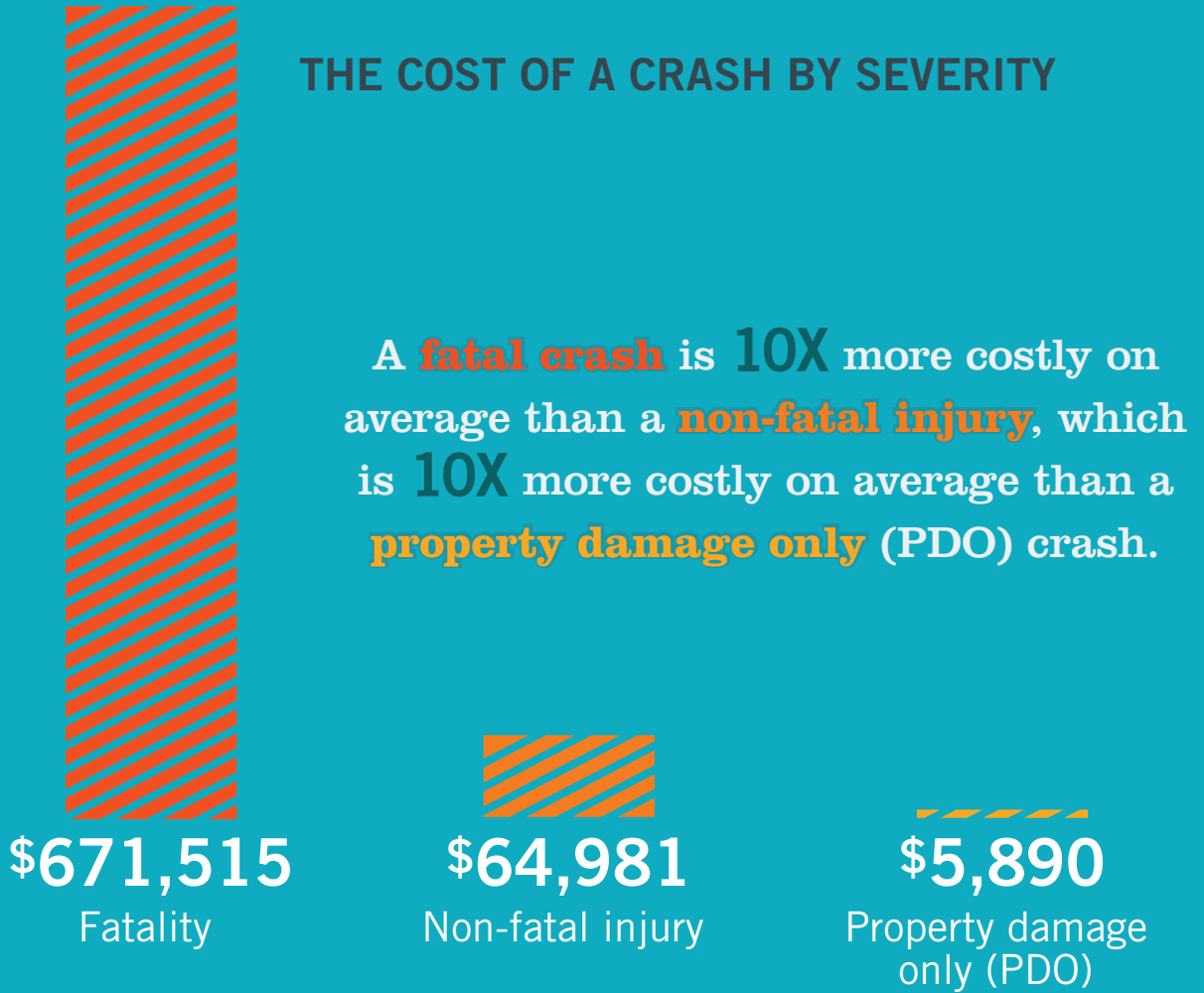
\$4.9

BILLION

SEE TABLES 9, 8, 7 and 5 IN THE COST OF MOTOR VEHICLE CRASHES TO EMPLOYERS—2015™

**According to NHTSA, for front-seat
occupants, wearing a seat belt reduces risk
of serious injury or death by about 50%.**

THE COST OF A CRASH BY SEVERITY



Wearing a seat belt could be the difference between a fatal crash and one resulting in a non-fatal injury



Wearing a seat belt could turn a crash with a non-fatal injury into a PDO crash

SEE TABLE 4 IN THE COST OF MOTOR VEHICLE CRASHES TO EMPLOYERS—2015™

Wearing a seat belt saves lives, reduces injuries and is good business, too.

Report: COST OF MOTOR VEHICLE CRASHES TO EMPLOYERS—2015™

Use this report to develop a business case to justify investments in a road safety program for occupational fleet drivers and ALL employees.



This report was developed for NETS by the Pacific Institute for Research and Evaluation (PIRE) through a grant from the National Highway Traffic Safety Administration to help employers calculate the costs of crashes to their businesses.

DOWNLOAD THE REPORT

Cost of Motor Vehicle Crashes to Employers—2015™ >

USING THE REPORT TO CALCULATE YOUR COSTS OF CRASHES

A fleet of 1,000 vehicles averages costs of **\$1,178,000** per year for property damage alone.

*PER ELEMENT FINANCIAL (FORMERLY PHH), 20% OF A FLEET IS INVOLVED IN A CRASH ANNUALLY

A single non-fatal injury crash has an average cost of **\$64,981**.

SEE TABLE 4 IN THE COST OF MOTOR VEHICLE CRASHES TO EMPLOYERS—2015™

Investing in road safety can reduce
your crash rate by 50% or more.

PROPERTY DAMAGE ONLY COSTS FOR A FLEET OF 1,000 VEHICLES

	Pre-fleet safety investment cost ¹	Portion of fleet involved in a collision	Post-fleet safety investment cost	Potential annual savings
NETS Member A ⁴	\$1,178,000	10%	\$589,000 ²	\$589,000
NETS Member B ⁴	\$1,178,000	6%	\$353,400 ³	\$824,600

¹ 1000 vehicles x 0.2 x \$5890 (PDO costs per vehicle) = \$1,178,000

² 1000 x 0.1 x \$5890 = \$589,000

³ 1000 x .06 x \$5890 = \$353,400

⁴ Actual examples from the NETS 2014 STRENGTH IN NUMBERS® Fleet Safety Benchmark

Road safety programs can
reduce the costs of crashes and can also
lower the average number of crashes.

HOW TO DEVELOP A ROAD SAFETY PROGRAM

For All Employees

Start with a proven employee-wide seat belt use campaign



2seconds2click.org

- Low cost, easy to implement
- Minimal administrative time
- Only 6 weeks to conduct
- FREE toolkit with all materials

Case Study Coca-Cola Refreshments Bismarck, ND

54%

Seat belt use pre-campaign



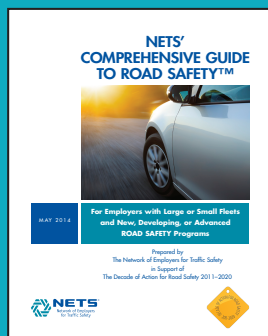
84%

Seat belt use post-campaign



For Fleets

Download NETS' **FREE** Comprehensive Guide to Road Safety™



For companies with new, developing or advanced road safety programs

- For fleets of all sizes
- For all vehicle types
- Global applicability

FOR MORE INFORMATION

Contact Susan Gillies, NETS, at sgillies@trafficsafety.org

ADDITIONAL RESOURCES

The **NETS Guide to Defensive Driver Training™**
available **FREE** at www.trafficsafety.org

The **NETS STRENGTH IN NUMBERS®** Fleet Safety
Benchmark Program at www.trafficsafety.org

Disclaimer: This information is provided as a courtesy by NETS to its members and also to the general public. It is provided "as is," without any representations or guarantees as to its accuracy, and neither NETS nor any contributing company is liable for the content or use of this information.



© 2015 Network of Employers for Traffic Safety
344 Maple Avenue West #357 Vienna, VA 22180

NETS is registered by the US Internal Revenue
Service as a 501(C)3 non-profit organization